

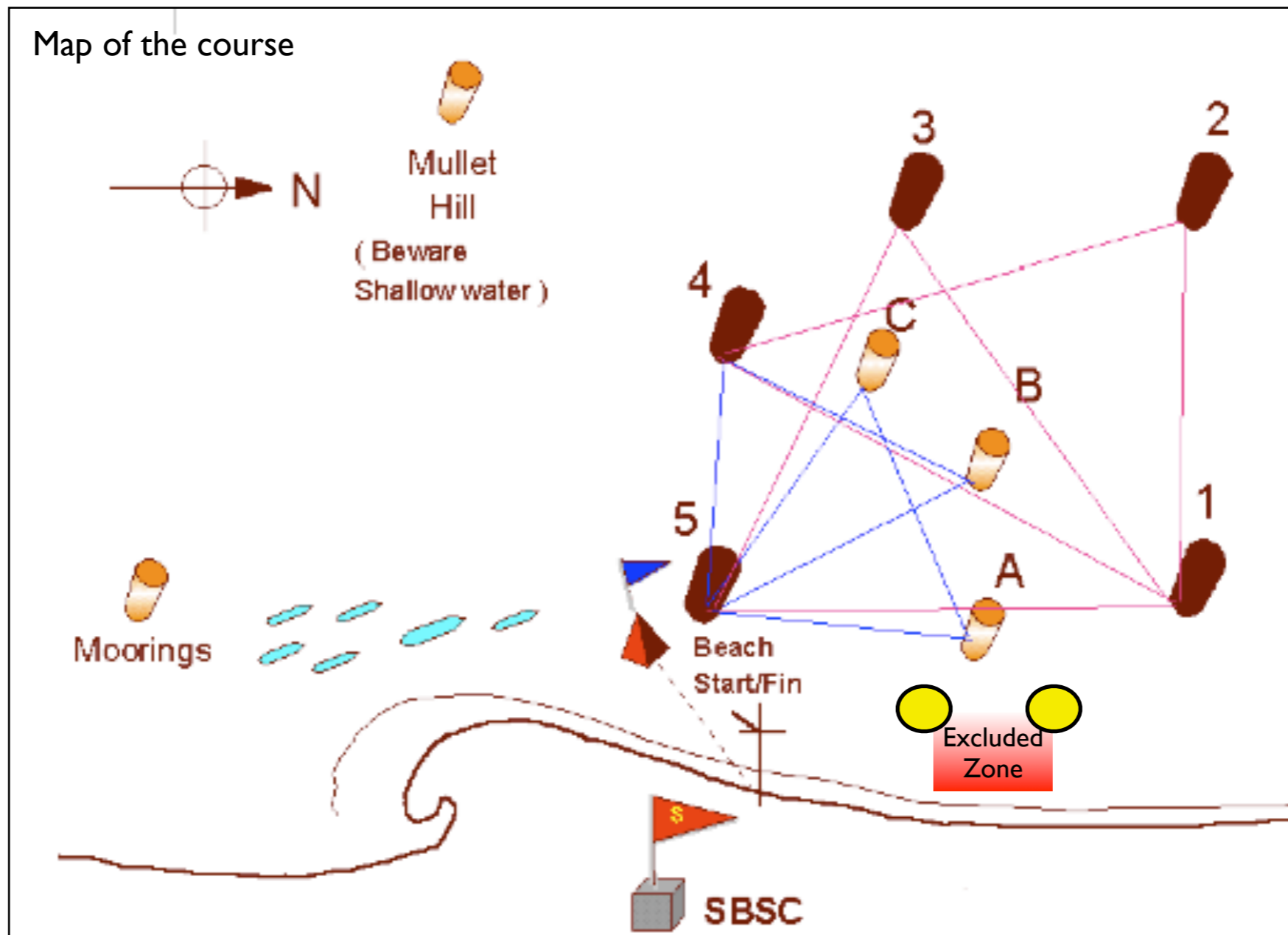
Snettisham Beach Sailing Club

Club Sailing Instructions 2010

1. **Rules.** Club racing will be governed by the “Racing Rules of Sailing 2009-2012”, (RRS) except as any of these are changed by these Sailing instructions (SI`s).
2. **Conditions of entry.** Only fully paid-up members of Snettisham Beach Sailing Club may enter eligible boats in club competitions. A boat is entirely responsible for her own safety, whether afloat or ashore, and nothing, whether in the Notice of Race or Sailing Instructions or anywhere else, reduces this responsibility. It is for the boat to decide whether she is fit to sail in the conditions in which she finds herself. By launching or going to sea, the boat confirms that she is fit for those conditions and her crew is competent to sail and compete in them.
3. **Insurance.** Each participating boat shall be insured with valid Third-party liability insurance with a minimum cover of £ 2,000,000 per event, or the equivalent amount.
4. **Disclaimer of Liability.** Competitors participate in club racing entirely at their own risk. See rule 4 of the RRS, Decision to Race. The organizing authority will not accept any liability for material damage or personal injury or death sustained in conjunction with or prior to, during, or after club racing. The organizers encompass everyone helping to run the race and the event, the Sailing Club, and include the Race Officer, the Patrol boat drivers and crews and Beach masters.
5. **Personal Buoyancy** shall be worn by all competitors whilst racing. Neither a wetsuit nor a drysuit shall constitute adequate buoyancy.
6. **Notices to Competitors.** Notices to competitors will be posted on the Official Notice Board (s) located at the clubhouse
7. **Signals made ashore.** Signals made ashore will be hoisted either on the Clubhouse flagpole or the Beach Mast.
8. **Schedule of races.** The Schedule of races will be as displayed in the relevant fixture list.
9. **Class Flags.** Dart 18:- D Enterprise:- E Topper:- T Laser 2000:- Class Flag Handicap:- Numeral 2
10. **The Course.** The Marks of the course and the sequence of rounding will be displayed on the Committee Boat or at the Beach Mast. A red or green flag will be displayed on the committee boat / Beach Mast, to indicate which side the mark should be left. Or see “B. Gate Start procedure”, Flag O for old Olympic course.
11. **Marks.** The course marks 1,2,3,4 & 5 will be large Black cylindrical buoys, Marks A B & C will be small orange cylindrical Buoys. Moorings and Mullet Hill will also be small orange cylindrical Buoys. Buoys “X” and “Y” orange will be large cylindrical portable buoys. Two small cylindrical yellow navigation marks to the north of the launch area, approx 150m off shore, mark excluded sailing zone.

Snettisham Beach Sailing Club

Club Sailing Instructions 2010



Angles and Distances are approximate, courses are suggested only, any combination of buoys may be used, as displayed on the Committee Boat or at the Beach Mast.

Snettisham Beach Sailing Club

Club Sailing Instructions 2010

The Start / Finish Procedure

14 A : Committee Boat and Beach Mast Starting and Finishing Procedure. (CLUB HANDICAP EVENTS) – *With Officer of The Day*

For Club Handicap Events, Committee Boat and Beach Mast Starts will be implemented by signals as follows. Races will be started by using Rule 26 with the warning signal given 5 minutes before the starting signal.

- 5 minutes before the start. Warning class flag numeral 2 up with 1 sound signal.
- 4 minutes before the start. Preparatory flag up with sound signal
- 1 minute before start. P flag down with sound signal
- Starting, Numeral 2 flag down with sound signal

The Start line will be between the mast on the Committee boat displaying an Orange flag and a mark of the course or a red bladder buoy with red flag, or with the Beach Mast displaying an Orange flag and a red bladder buoy.
A boat shall not start later than 10 minutes after her starting signal.

The Finish. The Finish will be between the mast of the finishing vessel displaying a Blue flag, and a mark of the course or a red bladder buoy with a Blue flag or between the beach mast displaying a Blue flag and a red bladder buoy with a Blue flag.

Shorten Course. The course may be shortened in accordance with RRS 32.2

Race Duration. Each race shall be expected to last approximately 60 minutes as conditions allow. There will be no fixed number of laps.

Time Limits. The time limit for each race shall be 1.5 hrs. Boats failing to finish 20 mins after the first boat shall be scored “did not finish”. This changes RRS 35.

Snettisham Beach Sailing Club

Club Sailing Instructions 2010

14 B: Gate Start and Finishing Procedure. (MONTHLY FLEET SERIES RACING) - *With competing Race Officer*

For Monthly Fleet Series Racing, Gate Boat Starts will be implemented. The boat finishing second within her fleet will act as Gate boat and Race officer for the next race.

The Gate boat duties to include :-

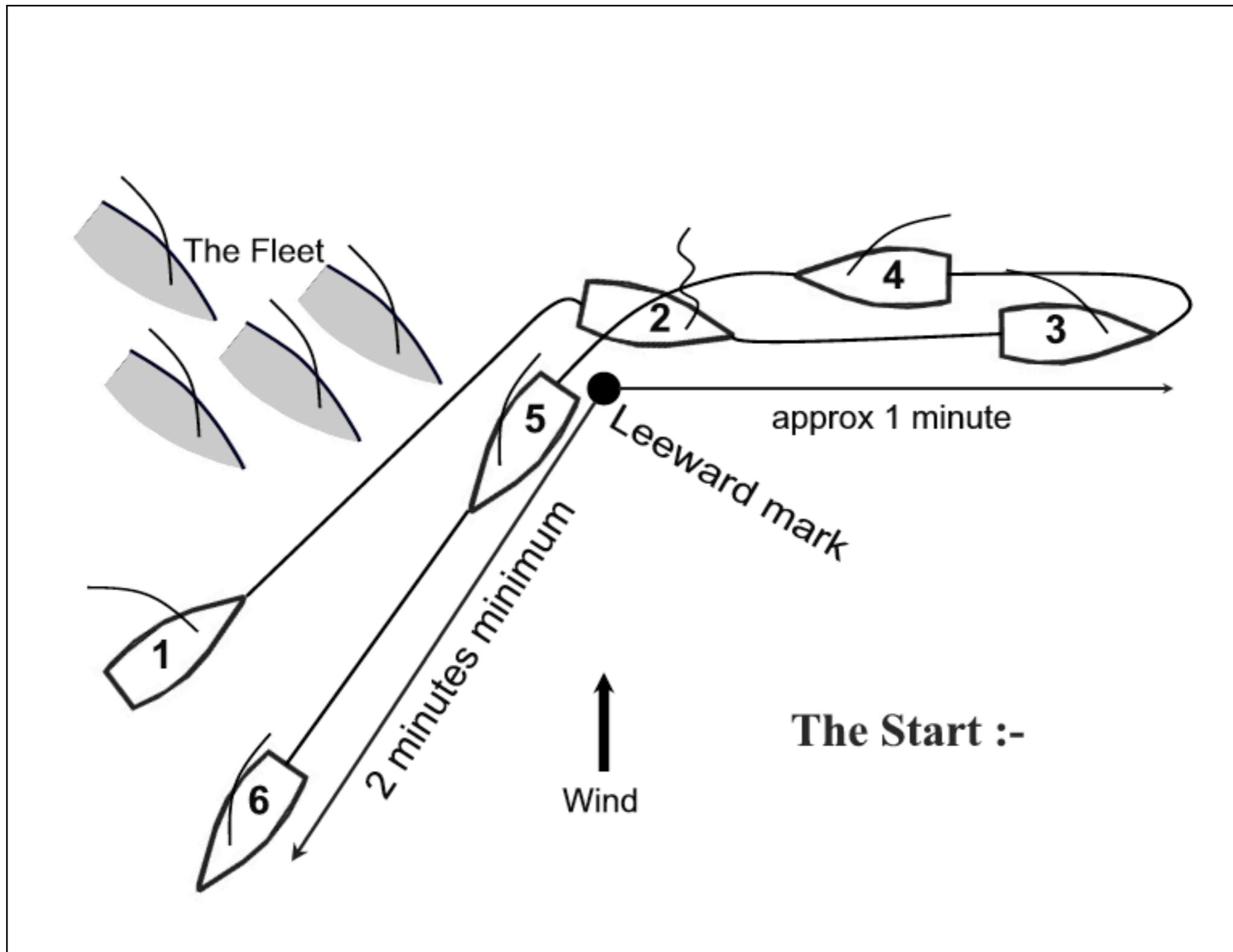
- ✻ Setting of the course and including the No of laps.
- ✻ Starting the race following “The Gate Start Procedure” (see Fig 2)
- ✻ Shortening of the course if the conditions require.
- ✻ The race winners to post results.
- ✻ In the event of a protest, to organise a protest committee and hearing in compliance with S.I. 12 as soon as practically possible, before posting the final race result.

The Gate Boat Start sequence:-

1. Gate boat sailing on a broad reach approaches Leeward mark from a position to windward of the leeward mark at approx. 45 degrees to the wind direction.
2. Hove-to for approx. 5 seconds, within 2 boat lengths, to leeward of the leeward mark.
3. Proceed on a beam reach 90 degrees to the wind, on Starboard for approximately 1 minute (or as water allows)
4. Turn (by tacking or going-about) onto Port and sail directly back to the Leeward mark.
5. At the Leeward mark Gate boat opens the start gate and moves to her best, true windward course on Port. The fleet then has 2 minutes in which to start by crossing on Starboard behind the gate boat.
6. After 2 minutes (or as the water allows) the Gate boat is free to sail any course she chooses. The gate will be closed when she tacks onto Starboard, and the start sequence is finished.

Snettisham Beach Sailing Club

Club Sailing Instructions 2010



Snettisham Beach Sailing Club

Club Sailing Instructions 2010

Fleet Position:-At a reasonably close position, allowing Gate boat the freedom to carry out starting procedure. The fleet should be ready to start the race on starboard, within the 2-minute period that the gate is open. The Gate boat has right-of-way during the start sequence.

The Finish:-

To finish the race, lead boat must be first to round the designated finish mark, with rights, and assume a course in the direction, but not to, the next mark.

Protests and Redress:-

Protests and requests for redress shall be written on forms available at the race office and delivered there, within 1 hr of the finish of the last boat in the last race of the day. Protests and requests for redress will be heard approximately in order of receipt, as soon as possible.

Scoring:-

The Series shall be scored as provided in Appendix A of the RRS using the “Low Point Scoring system” Discards will be used as laid out on the Results form.